



SEGUS

## IWS/Graph™

Graphics, Documentation & Monitoring  
for IWS z/OS



### A Clearer View of IWS

IWS users are well aware of exactly how important IWS is for the planning, automation, and control of batch processing. With thousands, or tens of thousands, of Jobs running every single night, IWS is crucial for the successful completion of batch production.

Over time, as sites change and grow, however, they become harder and harder to manage. When faced with problems, change requests, or simply a need to have IWS information readily available: IWS/Graph is the only choice for busy schedulers.

IWS/Graph's GUI interface displays IWS data on a PC in a clear, concise way: Applications, Operations, internal and external Dependencies, Run Cycles, Run Rules and Special Resources are shown as easy to understand netplans and barcharts.

The IWS/Graph Host component provides fast, accurate and detailed lists and reports for the more experienced users.

Using IWS/Graph, it is easy to distribute IWS information to other departments for verification or documentation.

By providing users access, better understanding and alignment of department goals can be achieved.

IWS/Graph can optionally be set up to allow generation of high quality HOME documents for VIEWing on any web browser.

**Outstanding graphics and reporting give users a better sense of control and understanding of their IWS environments**

## IWS/Graph for z/OS

### Areas of Application

IWS/Graph is the program for anyone who needs accurate information about IWS definitions or status information from the Current Plan, etc.

- Production planning
- Production control
- Application programmers
- Non IT departments
- Project and test teams

### Data

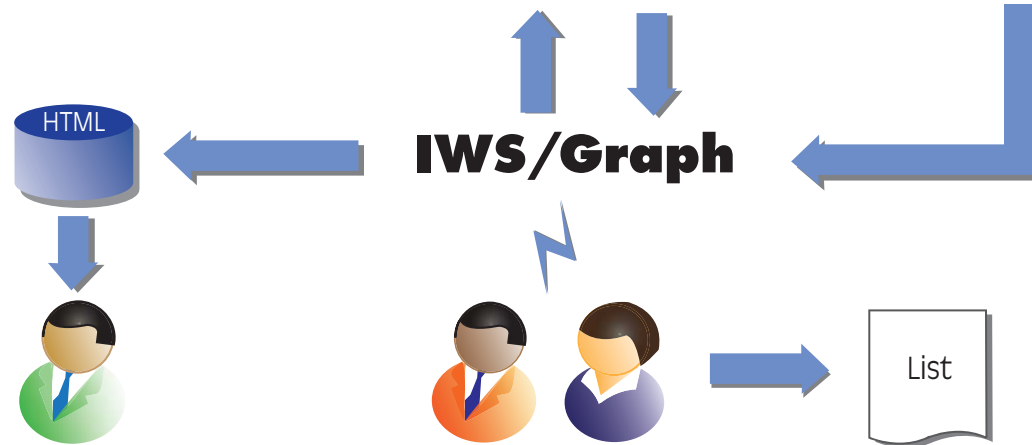
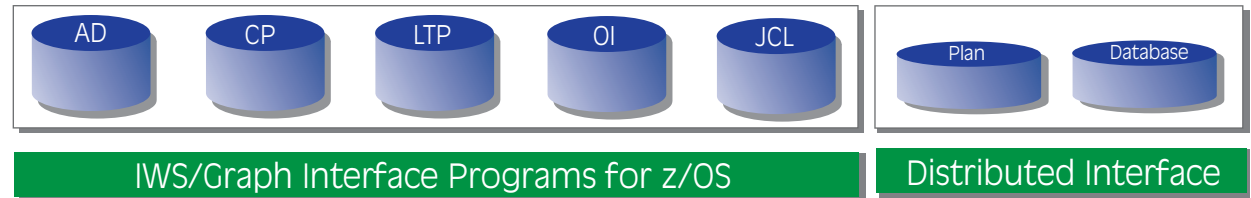
IWS/Graph accesses data from the Application Description, Current Plan, Mozart and Symphony files:

- Applications and Schedules
- Operations
- Dependencies
- Special Resources
- Operator Instructions
- Status information
- JCL

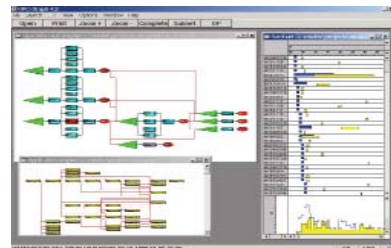
### Online and Offline

IWS/Graph z/OS can be used offline and online:

- Offline: Provide IWS information to other departments, without having to grant access to "live" data.
- Online: Direct access to the AD and CP. Immediately update the.
- Online: Use as a status monitor.

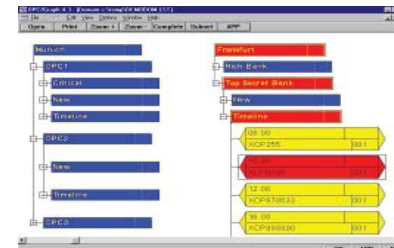


### Multiple Subsystems



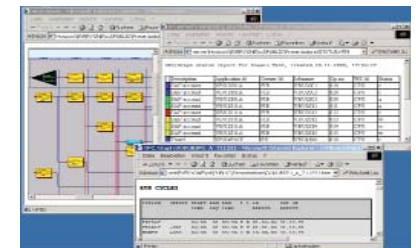
Information is presented as easy to understand netplans or barcharts. Symbols can be customized for clarity and convenience.

### Netplans and Barcharts



Monitor critical Applications and Operations or the whole Production. Expand this to include alerting using the included REXX and email interfaces.

### Reporting



Automatically create HTML files and distribute documentation, charts, status information and reports using your web browser.