



SEGUS

SmartJCL®

The cost-efficient way to check for JCL errors



The Importance of Job Control Language

In order for the agile businesses of today to retain a competitive edge, z/OS Production systems must be 100% reliable and highly available.

Job Control Language (JCL) is one essential part of keeping these legacy systems running smoothly. Coding errors in JCL can have unintended detrimental effects on Production and can cause unnecessary delays.

Due to the inherent complexity, each time new JCL is introduced, or existing language is changed, the potential for errors is increased.

The implications of poorly-written or insufficiently tested JCL code often go unrecognized:

- CPU time is wasted
- System resources are not fully utilized
- System availability is compromised.

However, under pressure from tight deadlines and time constraints, it is not always possible to thoroughly test Production JCL for ALL events before the Applications are submitted into Production.

SmartJCL is a JCL checking tool that validates JCL—at an affordable price. It offers all of the basic checking functions, that more expensive tools have, as well as integrated scheduler interfaces, a powerful reformat function, a remote checking facility, and a REXX interface to easily adapt the product to a site's own specific requirements.

Insufficient JCL testing and validation can be very costly in the long run

SmartJCL

Areas of Application

SmartJCL is the JCL checker of choice for all datacenters with a need to reduce typical JCL inaccuracies, such as:

- Syntax errors
- Missing files, programs and procedures
- Errors caused by incorrect scheduler variables

Data Sources

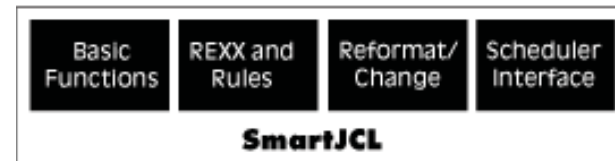
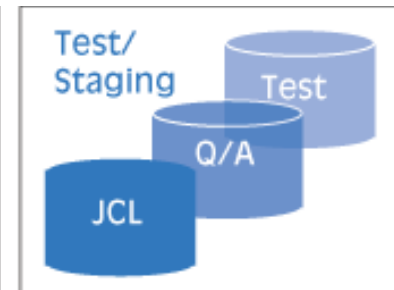
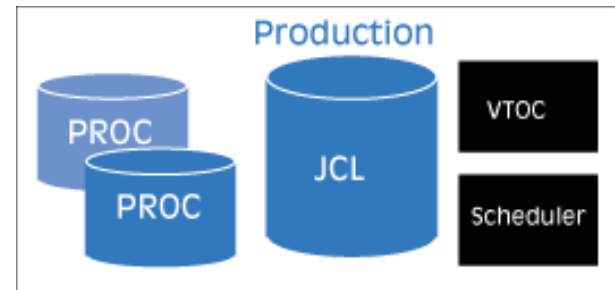
SmartJCL analyzes the JCL itself and all of the relevant components:

- Procedures
- Symbolic parameters and variables
- Utility statements
- DASD and UNIT availability
- Dataset availability
- Scheduler variables
- Databases, Load Modules

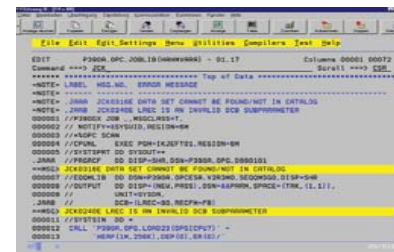
Additional Features

In addition to the JCL validation, SmartJCL also:

- Simulates catalog actions.
- Substitutes scheduler variables with the correct values.
- Provides a remote check feature to check JCL on another system.
- Validates site-specific standards through the REXX interface.
- Generates REXX to check standards through the ISPF dialog.
- Automatically formats and changes JCL according to site standards, e.g. alignments of parameters.
- Security checks, eg. RACF

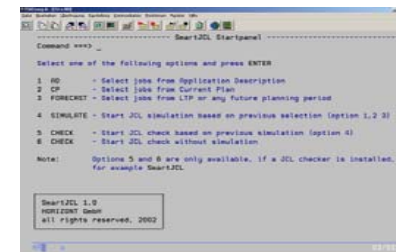


Edit Macro Interface



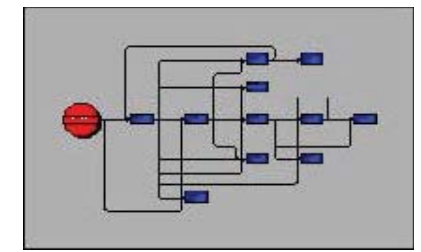
SmartJCL can be invoked from the ISPF editor.

Scheduler Interface



SmartJCL has interfaces to IWS (IBM Workload Scheduler) and Control-M. Jobs to be checked can be selected by scheduler specific values, such as Application, Owner or Workstation.

Checking Job Streams



SmartJCL can check complex Job Streams. Catalog actions can be simulated in advance to avoid conflicting disposition parameters.