



IWS/WebAdmin™ z/OS

The Web Interface to IWS z/OS



Simplify IWS Administration on z/OS

Many IWS users employ the standard IWS ISPF interface; it is fast and reliable. However, it has one big disadvantage: it was designed for IWS *experts*. For all other users, ISPF can be a little cumbersome.

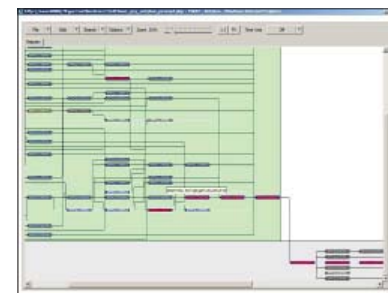
Traditionally, the ISPF interface also doesn't allow access to multiple IWS subsystems at the same time. This leads to additional, time-consuming efforts in large shops.

IWS/WebAdmin z/OS is *the* solution to both of these problem areas. Production planners and controllers can easily manage the Current Plan across multiple IWS subsystems, and all other personnel can quickly access IWS data via the simple web interface.

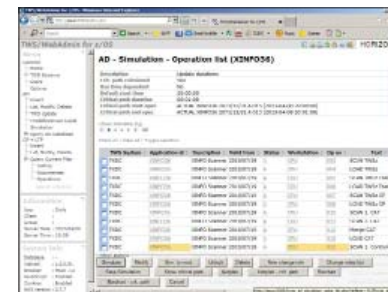
The integrated RDBMS automatically synchronizes with the AD and CP of all IWS systems. Complex queries and a multiple of report types and graphics are quickly created— with no impact to the IWS subsystems in any way.

Applications teams can easily monitor their own workloads—even from a tablet or smart phone.

Manage multiple IWS subsystems from an easy to use web interface



Critical Path



Simulation

IWS/WebAdmin z/OS

Features

Modify Applications in AD

- Insert, modify and delete Applications, Run Cycles, Operations, Dependencies, and Special Resources.
- Modifications are first stored only to the internal RDBMS. An administrator, or other authorized user, can load the changes back to IWS at a later time.

Applications in CP and LTP

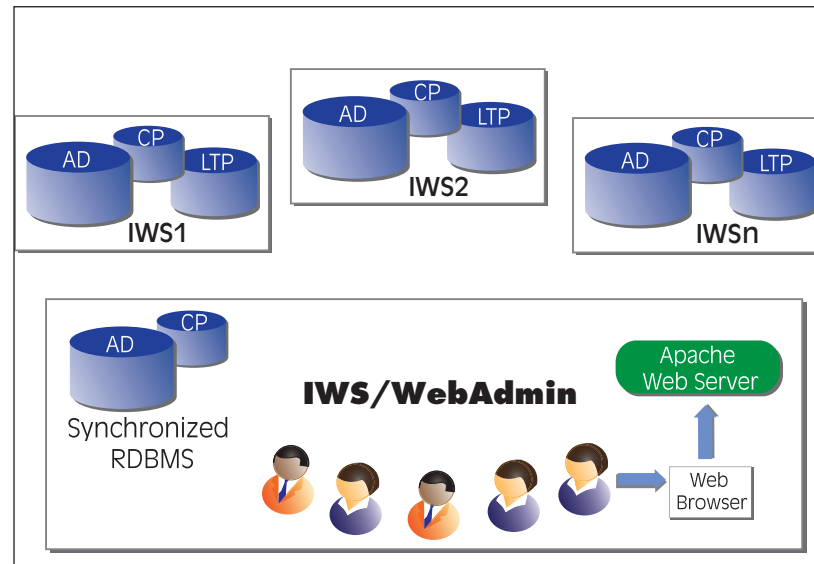
- Display
- Delete
- Insert

Applications in CP

- Restart all error Operations.
- Restart from a selected Operation.
- Occurrence - Set to Complete.
- Change Input Arrival.
- Operation insert and delete.
- Dependency insert and delete.

Plan Analysis

- Fast queries, e.g.: which Jobs are planned between 10:00 and 12:00?
- Graphics (netplans and barcharts).
- Special Resource usage.
- Critical Path.
- Based on actual or "historical" plan.
- Simulation of Critical Path.
- CP monitoring
- CP loop analysis (with Runcycle Resolution)
- CP Forecast.



Areas of Application

TWS/WebAdmin is the program of choice for anyone responsible for Production processing:

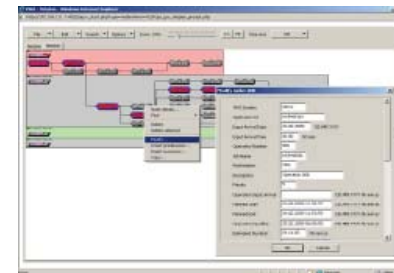
- Production planning
- Production control
- Application programmers
- Anybody requiring information about an IWS Current or Long Term Plan

Multiple Subsystems



All IWS subsystems are accessible from one single browser window, or—even better—from one single list, e.g. the Operation list.

Netplans and Barcharts



IWS plans are presented as netplans or barcharts. All printers and plotters are supported.

Reporting



Use the predefined reports, build your own queries or run raw SQL to get the information you need.